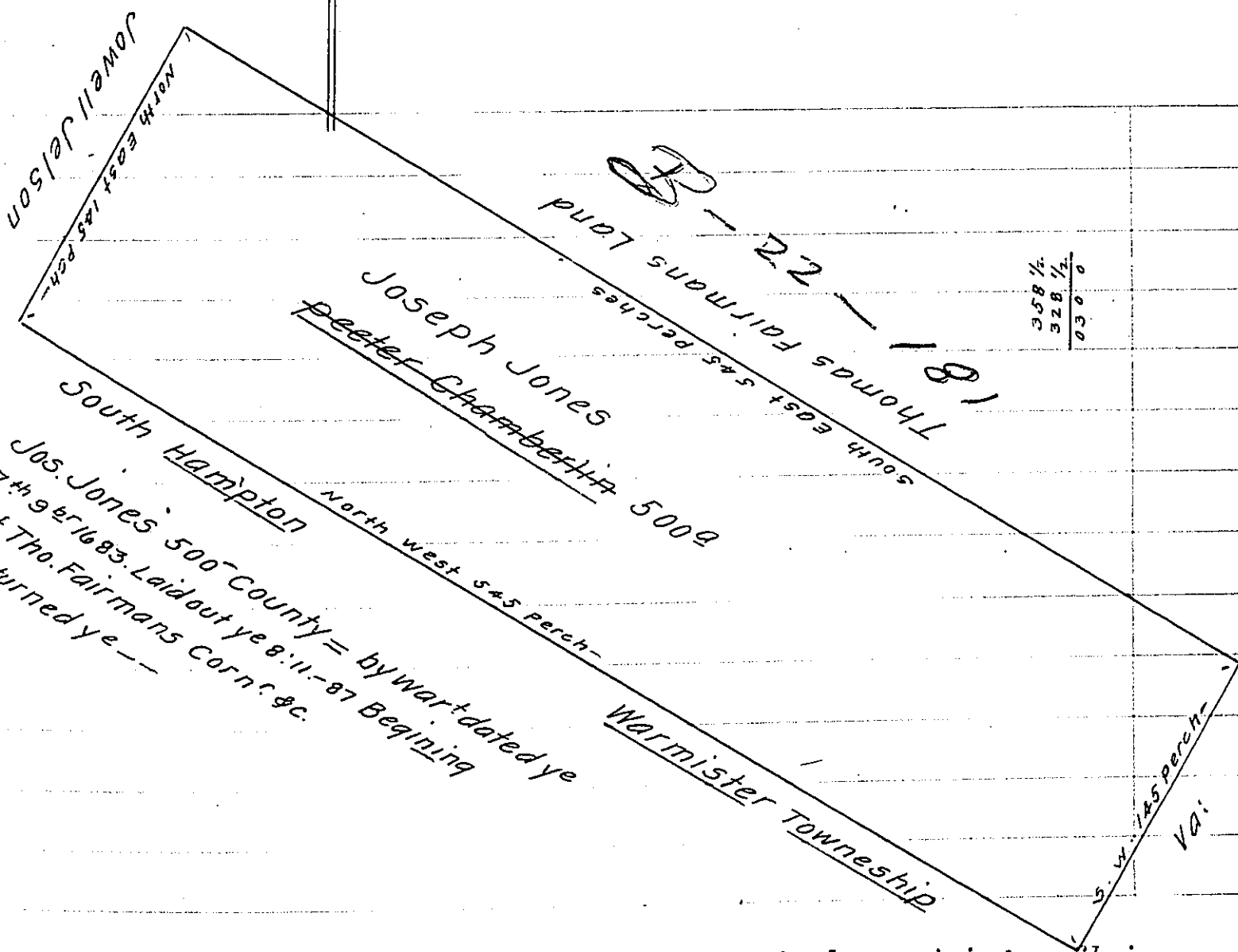
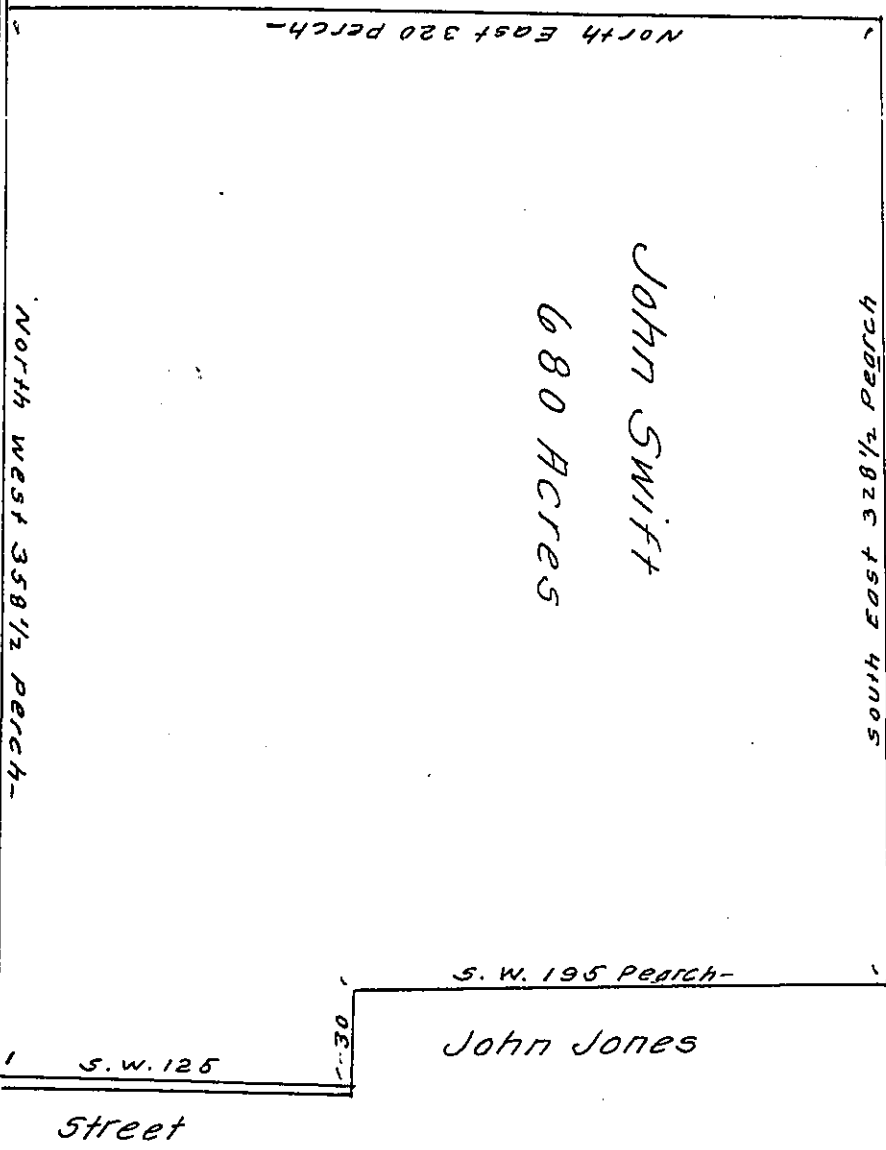


FORM No. 1.

Jn. Swift 680 acres by two warr'dated yeane ye 7th 9^{mo} 1683.
yeath ye 13: 10: 1690. Laid out ye 13: 10: 1690: 680. 200 acres where
of is in right of Tho. Fairman in part of Wm. Starryes purchas-
of 5000 ye oth^r his owne purchase, Beginning at a Corn^r
Post of Peit^r Groomes Land thence &c. -

Township Roade



IN TESTIMONY that the above is a copy of the original remaining on file in the Department of Internal Affairs of Pennsylvania, made conformably to an Act of Assembly approved the 16th day of February, 1833, I have hereunto set my Hand and caused the Seal of said Department to be affixed at Harrisburg, this third day of March 1910.

Henry Howard
Secretary of Internal Affairs.